

Overview

- Full upgrading compatibility with the previous models of MP1010/MP1110 series
- Equipped with industry-leading compact 10x zoom lens
- New functions for the various applications (High sensitivity, Day/Night function, Multi-interface, etc.)

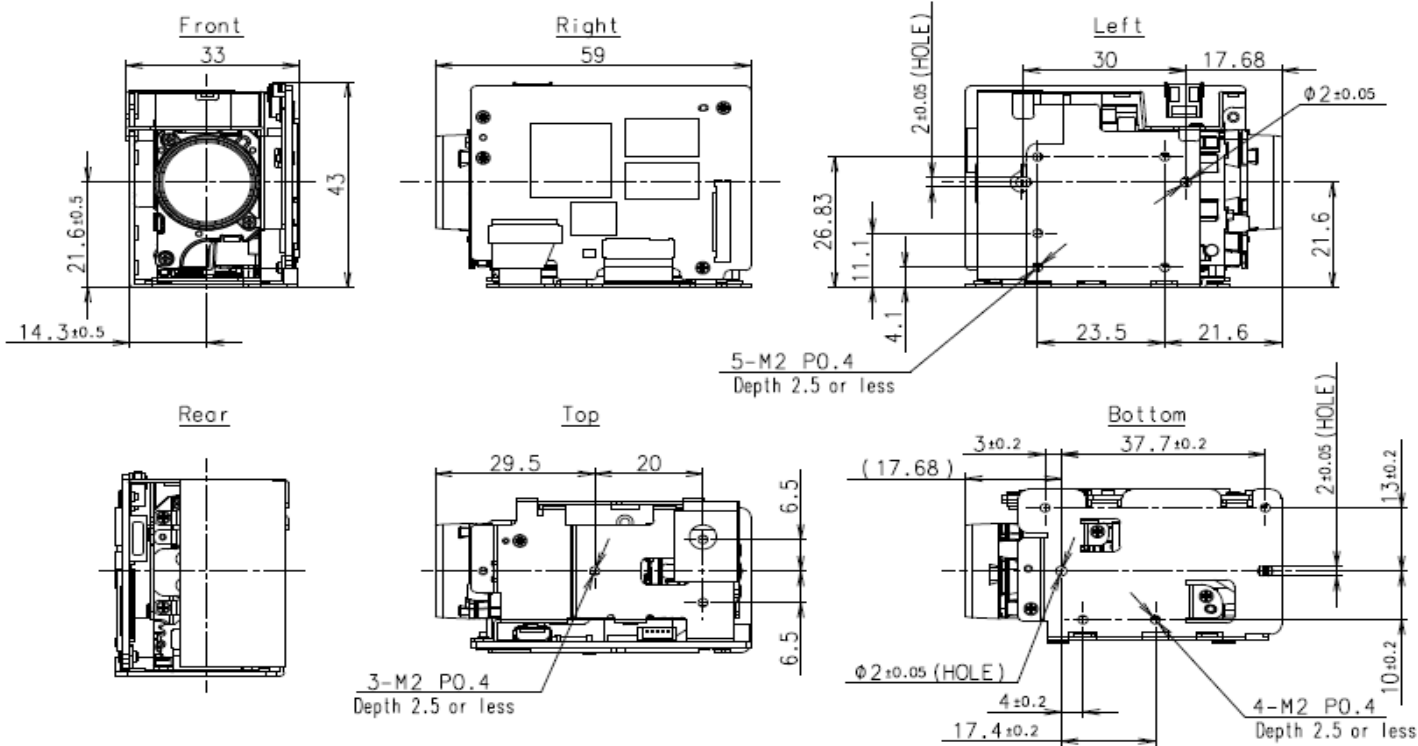
Specifications

■ Camera		
Image sensor	Sony's CMOS image sensor with STARVIS™ technology	
	<small>STARVIS is trademark of Sony Group corporation or its affiliates.</small>	
Pixel output (H x V)	1920 x 1080, 1280 x 720	
Signal system (HD)	1080p/60, 1080p/59.94, 1080p/50, 1080p/30, 1080p/29.97, 1080p/25, 720p/60, 720p/59.94, 720p/50, 720p/30, 720p/29.97, 720p/25	
Signal system(SD)	NTSC/PAL	
Minimum illumination	0.1 lx (1/30sec, F/1.8, 50%, Color, Typical) 0.025 lx (1/30sec, F/1.8, 50%, B&W, Typical)	
Recommended illumination	100lx ~100,000lx	
S/N	More than 50dB	
Gain	Auto/Manual	
Shutter speed	1/1~1/10,000 sec	
Sync system	Internal	
Exposure compensation	-12dB ~ +12dB (Total 13 steps)	
Backlight compensation	ON/OFF	
Gamma	standard/straight/narrow/wide	
Aperture control	16 steps	
White balance	ATW1(Narrow), ATW2(Wide), INDOOR, OUTDOOR, One push, Manual	
AE (Auto exposure mode)	Auto, Manual, Priority mode (shutter/iris)	
Lens (wide~tele)	10x optical zoom f = 3.3~33.0mm F/1.8~3.4	
Zoom mode	Standard/Variable/Direct	
Zoom movement speed (wide to tele)	1.7 sec (Focus Tracking ON)	
Digital Zoom	Up to 16x	
Focusing system	Auto, Manual, One push, AF sensitivity	
Horizontal viewing angle (wide to tele)	59.2° ~ 6.7° (※ except when EIS is operated)	
Minimum object distance (wide to tele)	Visible light : 10mm(wide)~800mm(tele) 850nm : 10mm(wide)~1200mm(tele)	
■ Functions		
EIS (Electronic Image Stabilization)	OFF/ON	
Wide-dynamic range (Gamma)	OFF/ON	
Day/Night (ICR)	OFF/ON/AUTO	
Defog	OFF/ON (Level : 1~3)	
Noise reduction (3D + 2D)	OFF/ON (Level : 1~5)	
Privacy zone mask	Up to 8 places	
Slow shutter	OFF/ON (Max 1sec)	
Picture effects (Black White)	OFF/ON	
Picture freeze	OFF/ON	
Electronic Flip (E-Flip)	OFF/ON	
Mirror image	OFF/ON	
Temperature readout	available	
Title display	OFF/ON (20 characters/line, max. 12 lines)	
■ General		
Power requirement	DC 8~12±10%	
Power consumption	Approx.2.5W (Approx.4.4W in the zoom and focus operation)	
Recommended temperature	0~+40℃	
Operating temperature	-5~+60℃	
Operating humidity	30%~80% (no condensation)	
Storage temperature	-40~+60℃	
Dimensions (W x H x D)	33 x 43 x 59 mm	
Wight	Approx.70g	
■ Interface		
Video output (HD)	LVDS : Digital Y/Pb/Pr 4:2:2 HDMI : Digital Y/Pb/Pr 4:2:2(HDMI Type D) <small>※The Adopted Trademarks HDMI, HDMI High-Definition Multimedia Interface, and the HDMI Logo are trademarks or registered trademarks of HDMI Licensing Administrator, Inc. in the United States and other countries.</small>	
Video output (SD)	CVBS 1.0V(p-p,75Ω)	
Camera control interface	VISCA protocol <small>*VISCA is a registered trademark of SONY Corporation</small>	

※Product specifications, appearance and performance are subject to change without notice

Dimensions

unit : mm



Model	Tamron Co., Ltd	Category	Issue	No
MP3010M-EV		camera module	2024/1/1	1/1