

TAMRON

THE BEST LENSES MAKE THE BEST PHOTOS

LENS CATALOGUE



www.tamron-america.com



WHAT LENSES DO YOU NEED?

All-In-One™ Zooms

All-in-one lenses offer an incredibly wide focal range, letting you leave your camera bag behind and venture out with just a single lens.

Standard Zooms

A standard zoom lens spans a range of focal lengths from wide-angle to mid-telephoto, allowing you to capture diverse scenes such as landscapes, portraits, wildlife, and architecture.

Telephoto Zooms

A telephoto zoom is a long-focus lens designed to capture distant subjects like wildlife, birds, and airplanes, making them appear closer while also compressing landscapes for a dramatic effect.

Wide-angle Zooms

A wide-angle zoom is a lens with a focal length of 35mm or less, offering you a broad field of view to capture more of the scene within the frame. It's a favorite among videographers and landscape photographers.

Macro Lenses

A macro lens is designed for capturing close-up photos of small subjects with exceptional detail and sharpness, offering 1:2 or 1:1 magnification ratio for life-size or near half-size images.

Prime Lenses

A prime lens, or fixed focal length lens, has a single, unchangeable focal length, which often results in sharper images with fewer aberrations and improved depth control.

All-In-One™ Zooms

18-300mm

F/3.5-6.3 Di III-A VC VXD

MIRRORLESS

APS-C

■ SONY E
■ FUJIFILM X

This 16.6X zoom incorporates a VXD motor for accurate autofocus, VC image stabilization, and an impressive maximum magnification ratio of 1:2. Its compact and lightweight design makes it perfect for travel and everyday use.

MODEL B061 _____

28-200mm

F/2.8-5.6 Di III RXD

MIRRORLESS

FULL-FRAME

■ SONY E

The first all-in-one zoom with an F2.8 aperture at wide-angle for mirrorless cameras is a groundbreaking achievement. It combines the versatility of an all-in-one zoom with a fast maximum aperture and outstanding image quality, elevating its suitability for various photographic purposes. This zoom ensures exceptional portability at 4.6" (117mm) length, 20.3oz. (575g), and a Ø67mm filter size.

MODEL A071 _____

28-300mm

F/4-7.1 Di III VC VXD

MIRRORLESS

FULL-FRAME

■ SONY E

This 10.7x zoom covers a broad focal length range with superior imaging performance. At just 5" (126mm) long and 21.5oz (610g), it's ultra-compact for all-day shooting. It features a VXD linear focus motor for fast, precise focus, VC image stabilization for sharp hand-held shots at 300mm and in low light, and close focusing at 28mm for wide macro photography. It's compatible with the TAMRON Lens Utility™.

MODEL A074 _____



Model B061



Model A071



Model A074

Standard Zooms

17-70mm

F/2.8 Di III-A VC RXD

MIRRORLESS

APS-C

■ SONY E
■ FUJIFILM X

This first 4.1X large aperture standard zoom crafted for APS-C mirrorless cameras is designed to deliver a wide zoom range and exceptional image quality. Equivalent to 25.5-105mm (on a full-frame camera), the lens includes video-optimized VC image stabilization for outstanding handheld shooting.

□ MODEL B070 _____

20-40mm

F/2.8 Di III VXD

MIRRORLESS

FULL-FRAME

■ SONY E

This compact and lightweight fast standard zoom, at just 3.4" and 12.9 oz with a Ø67mm filter size, excels in versatility. It features a standard 40mm focal length for everyday use and a wide 20mm for landscapes and POV shots, making it perfect for both still photography and video. Compatible with TAMRON Lens Utility™.

□ MODEL A062 _____

SP 24-70mm

F/2.8 Di VC USD G2

DSLR

FULL-FRAME

■ NIKON F
■ CANON EF

This high-speed standard zoom features the best-in-class image stabilization of 5-stops. The lens not only attains top-tier image quality and mechanical performance but also delivers excellent image stabilization, courtesy of the Dual MPU system. Compatible with manufacturer's mirrorless adapters.

□ MODEL A032 _____



Model B070



Model A062



Model A032

Standard Zooms

28-75mm

F/2.8 Di III VXD G2

MIRRORLESS

FULL-FRAME

SONY E
NIKON Z

The 28-75mm G2 lens offers exceptional resolution and performance in a lightweight, compact design. Its VXD linear motor provides fast and precise autofocus. With close-up capabilities including a 7.1" MOD at 28mm and a 1:2.7 magnification ratio, it's also compatible with TAMRON Lens Utility™ for lens function customization, including A/B focus, and more.

□ MODEL A063 _____

35-150mm

F/2-2.8 Di III VXD

MIRRORLESS

FULL-FRAME

SONY E
NIKON Z

This unique F2 aperture zoom combines all the popular prime lens focal lengths into one versatile lens. It delivers exceptional image quality, close-focusing capabilities, and features a VXD motor for fast, precise autofocus. Compatible with TAMRON Lens Utility™ for customization, including A/B focus, it's perfect for portrait and travel photographers, as well as filmmakers seeking an all-in-one solution.

□ MODEL A058 _____



Model A063



Model A058

Telephoto Zooms

50-300mm

F/4.5-6.3 Di III VC VXD

MIRRORLESS

FULL-FRAME

■ SONY E

This 6X telephoto zoom starts at 50mm offering flexibility for subjects like sports, landscapes, and wildlife when the subject gets closer and 70mm would feel too tight. It's equipped with VC image stabilization for comfortable handheld photography at 300mm. Its compact size (5.9" and 23.5oz) make it highly portable and ideal for APS-C format cameras with 75-450mm equivalent range.

□ MODEL A069 _____

50-400mm

F/4.5-6.3 Di III VC VXD

MIRRORLESS

FULL-FRAME

■ SONY E

■ NIKON Z

Designed for wildlife and sports photography, this compact 8X lens transitions smoothly from standard to ultra-telephoto focal lengths. It also offers 1:2 macro capability. Features include VC image stabilization, a fast VXD AF motor, and TAMRON Lens Utility™ compatibility. An optional tripod mount (Model A035TM) is available for added stability.

□ MODEL A067 _____

70-180mm

F/2.8 Di III VC VXD G2

MIRRORLESS

FULL-FRAME

■ SONY E

This fast and lightweight telephoto zoom is a reliable choice for both professionals and enthusiasts. It features a VXD AF mechanism for fast, quiet, and precise autofocus, and VC image stabilization for improved steadiness. The lens provides a close MOD for added versatility. Compatible with TAMRON Lens Utility™.

□ MODEL A065 _____



Model A069



Model A067



Model A065

Telephoto Zooms

SP 70-200mm

F/2.8 Di VC USD G2

DSLR

FULL-FRAME

■ NIKON F
■ CANON EF

This high-speed telephoto DSLR zoom lens offers rapid autofocus and boasts best-in-class 5-stops image stabilization thanks to the Dual MPU system. The lens provides close focusing, moisture-proof construction, fluorine coating, Auto Detect image stabilization for panning, and additional functionalities. Compatible with manufacturer's mirrorless adapters.

MODEL A025 _____

70-300mm

F/4.5-6.3 Di III RXD

MIRRORLESS

FULL-FRAME

■ SONY E
■ NIKON Z

This telephoto zoom is the smallest and lightest in its class, measuring just 5.8" (148mm) long and weighing 19.2oz (545g), with a Ø67mm filter size. It features a high-speed RXD AF system for quiet, precise operation and has a moisture-resistant construction for added protection. APS-C mirrorless camera users can achieve an ultra-telephoto range equivalent to 105-450mm.

MODEL A047 _____

150-500mm

F/5-6.7 Di III VC VXD

MIRRORLESS

FULL-FRAME

■ SONY E
■ FUJIFILM X
■ NIKON Z

This ultra-telephoto zoom lens is exceptionally compact and supports handheld shooting with three VC modes for superior image stabilization. The VXD system ensures quiet, agile autofocus performance. With a 23.6" (0.6m) MOD at 150mm for powerful close-ups, it offers great versatility. It also includes a removable Arca Swiss tripod mount and provides a 750mm equivalent reach on APS-C cameras. Nikon Z mount is compatible with TAMRON Lens Utility™.

MODEL A057 _____



Model A025



Model A047



Model A057

Telephoto Zooms

SP 150-600mm

F/5-6.3 Di VC USD G2

DSLR

FULL-FRAME

■ NIKON F
■ CANON EF

This lens delivers outstanding optical performance with rapid USD autofocus and up to 5 stops of image stabilization via its 3 VC modes, powered by the Dual MPU system. The VC system also includes Auto Detect image stabilization for panning for bird and sports imaging. Compatible with the manufacturer's mirrorless adapters.

MODEL A022 _____

Wide-angle Zooms

11-20mm

F/2.8 Di III-A RXD

MIRRORLESS

APS-C

■ SONY E
■ FUJIFILM X
■ CANON RF

This fast-aperture ultra-wide-angle zoom is notable for its compact and lightweight design, measuring just 3.4" (86.2mm) in length and weighing 11.8oz (335g), with a Ø67mm filter size. At 11mm, it offers an MOD of 5.9" (0.15m) and a maximum magnification ratio of 1:4.

MODEL B060 _____

17-28mm

F/2.8 Di III RXD

MIRRORLESS

FULL-FRAME

■ SONY E

The most compact and lightweight ultra wide-angle zoom lens in its category, it combines unparalleled portability with exceptional image quality. The RXD stepping motor unit ensures quiet, high-speed, and precise autofocus, while the lens features a 7.5" (0.19m) MOD at the wide end, allowing for versatile close-up shooting.

MODEL A046 _____



Model A022



Model B060



Model A046

Wide-angle Zooms

17-50mm

F/4 Di III VXD

MIRRORLESS

FULL-FRAME

SONY E

This highly compact zoom lens offers maximum versatility for hybrid creators working in both still photography and video production. At F4, it delivers excellent image quality with a rich bokeh effect. Internal zooming, combined with high-speed, high-precision, and exceptionally quiet VXD autofocus, makes it ideal for capturing both video and still images. With a 7.5" (0.19m) MOD, it allows for detailed close-up shots of tiny subjects. Compatible with TAMRON Lens Utility™.

MODEL A068 _____

Macro Lenses

90mm M1:1

F/2.8 Di III VXD MACRO

MIRRORLESS

FULL-FRAME

SONY E
NIKON Z

The compact mid-telephoto 1:1 macro lens boasts high resolution and beautiful bokeh with unparalleled sharpness from center to edge and a velvety bokeh effect. Its 12-blade circular aperture design provides stunning circular bokeh and 12 rays for exquisite starburst effects. The compact size and weight fits comfortably in the palm and is easy to hold. The hood design with sliding window for easy filter rotation. Compatible with TAMRON Lens Utility™.

MODEL F072 _____



Model A068



Model F072

Prime Lenses

20mm M1:2

F/2.8 Di III OSD

MIRRORLESS

FULL-FRAME

■ SONY E

This remarkably lightweight ultra-wide prime lens provides an unparalleled close-up wide-angle perspective with its unique half lifesize (1:2) macro capability.

MODEL F050 _____

24mm M1:2

F/2.8 Di III OSD

MIRRORLESS

FULL-FRAME

■ SONY E

An outstandingly lightweight wide-angle prime lens provides an exceptional close-up wide-angle perspective, featuring a distinctive half lifesize (1:2) macro capability.

MODEL F051 _____

35mm M1:2

F/2.8 Di III OSD

MIRRORLESS

FULL-FRAME

■ SONY E

This standard wide-angle prime lens stands out for its remarkable lightweight design and offers an unparalleled close-up wide-angle perspective, showcasing a distinctive half lifesize (1:2) macro capability.

MODEL F053 _____



Model F050

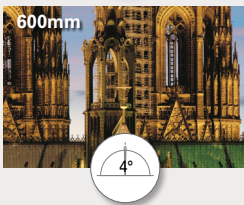
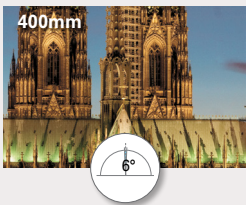
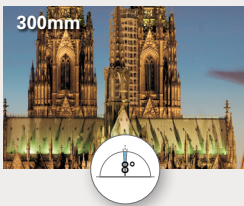
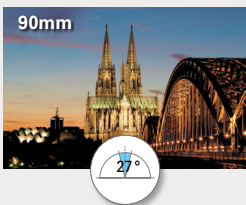
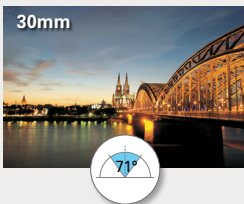
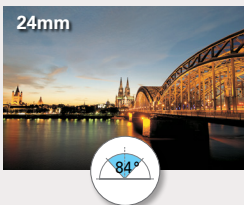


Model F051



Model F053

FOCAL LENGTH ON DIGITAL CAMERAS WITH FULL-FRAME SENSOR



CAMERA COMPATIBILITY

The designation Di (Digitally Integrated) refers to a lens developed specially for the exacting requirements of digital cameras. Please ensure when purchasing that the lens has the correct mount for your camera system.

Di

for full-frame DSLR cameras

Di III

for full-frame mirrorless cameras

Di III-A

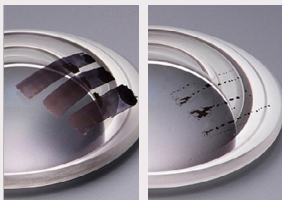
for APS-C mirrorless cameras

Some models cannot be used with all mounts. Di lenses with built-in motors for Nikon and Di II lenses have no aperture ring.

BBAR-G2

Next Generation BBAR (Broad Band Anti-Reflective) Coating

BBAR-G2 provides a full-contrast image with minimal ghosting and flare and is TAMRON's next generation coating.



FL

Fluorine Coating

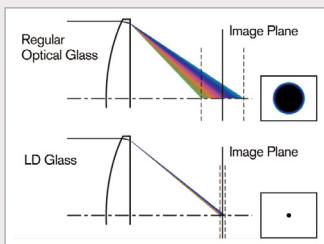
This coating repels water and dirt and makes it easier to wipe away smudges. The fluorine coating, developed for the first time for use in TAMRON

photographic lenses, is based on technology developed during the course of our industrial lens production such as the lenses used in automotive cameras.

LD / XLD

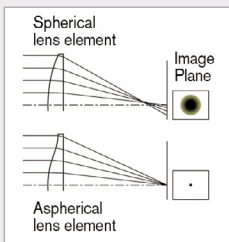
Low Dispersion and Extra Low Dispersion Glass

LD glass elements in a lens help reduce chromatic aberration (color fringing) that reduces the sharpness of an image. Use of XLD lens elements allows greater control over chromatic aberration and magnification aberrations, the two major factors that inhibit image quality enhancement. In combination with LD elements, XLD elements are used to deliver the highest possible contrast and the finest detail.



ASL

Hybrid Aspherical Elements



TAMRON uses several hybrid Aspherical lens elements in many lenses bearing the ASL designation. Through the effective application of Hybrid Aspherical Technology, one lens element can take the place of multiple elements without compromising performance. This is what allows us to produce remarkably compact long-range lenses that deliver a uniformly high level of image

quality at all focal lengths and apertures in compact designs.

GM

GM (Glass Molded Aspherical) Lens Elements, XGM (eXpanded Glass Molded Aspherical) Lens Elements

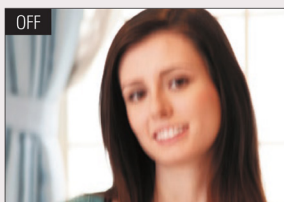
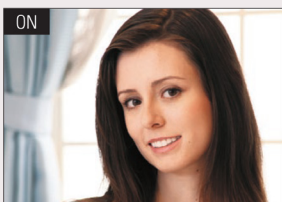
GM and XGM lens elements are capable of efficiently correcting aberrations in the angle of view that changes significantly with an ultra

wide-angle zoom lens. It has an especially significant impact on minimizing distortion and enhancing the sharpness of the image at its periphery. Furthermore, the molded-glass manufacturing method allows the fabrication of a wider range of lens shapes than the composite aspherical lens method. Moreover, XGM also effectively controls aberrations and reduces total lens size.

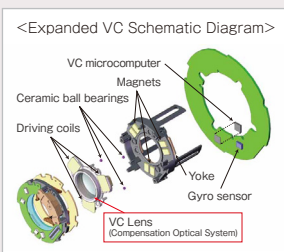


VC

Vibration Compensation Image Stabilization System



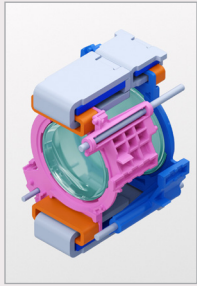
TAMRON's VC uses a proprietary actuator and algorithms to deliver an extremely stable viewfinder image with excellent tracking. The 3-coil system electromagnetically drives the lens element that compensates for vibration, which glides smoothly on three balls with little friction. Several lenses offer different modes for panning and video shooting. VC can also be customized with the TAP-In Console or TAMRON Lens Utility. VC should always be turned off when using the lens on a tripod.



VXD

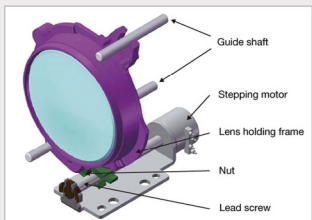
Voice-Coil eXtreme-torque Drive

The VXD AF Drive provides the highest levels of autofocus speed and precision in TAMRON'S long history and is TAMRON'S first-ever linear motor focus mechanism for stunningly fast and accurate auto-focusing. Two VXD units are arranged in a floating system and operated simultaneously via electronic control to achieve excellent optical performance at all shooting distances near and far. Focus tracking is vastly improved for sports and racing photography.

**RXD**

Rapid eXtra-silent Drive

The RXD (Rapid eXtra-silent stepping Drive) uses an actuator to precisely control the rotational angle of the motor, allowing it to directly drive the focusing lens without passing through a reduction gear. A sensor that accurately detects the position of the lens enables high-speed and precise AF, which is ideal when shooting moving subjects or video.

**USD**

Ultrasonic Silent Drive

TAMRON'S USD is an ingeniously upgraded AF drive system developed by TAMRON to deliver the extraordinary AF speed and precision needed to capture every nuanced high-speed action, along with virtually noiseless operation. This advanced electronically controlled AF system is linked to a precision focusing helical that moves the lens to the precise focus point.

**OSD**

Optimized Silent Drive

OSD is a DC motor unit for the AF system that achieves faster focus and accuracy compared to a general DC motor. Improved tracking speed and response means you won't miss the shot. The optimized motor minimizes AF noise and provides superbly quiet performance.



ZL

Zoom Lock

Another original TAMRON mechanical engineering concept is the Zoom Lock (ZL), a simple convenience feature that prevents undesired extension of the lens barrel when carrying the camera/lens unit on a neck strap.

FLX

Flex Zoom Lock

This mechanism quickly locks or unlocks the zoom at any position by simply sliding the zoom ring. Photographers can shoot from any angle without the zoom extending unintentionally. The customary Zoom Lock switch that prevents unwanted barrel extension during transportation is incorporated into the lens as well. Featured on models A022 and A057.

**FTM**

Full-Time Manual Focus Mechanism

Enables the user to manually adjust focus without engaging the AF/MF switchover button, even when in auto-focus mode.

**FLMT**

Focus Limiter

Changing from AF to Limit will limit the focus range of the lens depending on what distance the manual focus ring is set to. For example, the 150-600mm lens can be set to limit focus from 15 meters to infinity. In this case, the lens will not focus 15 meters and closer. This

is useful when shooting subjects at a distance such as birds as it allows the lens to disregard subjects in the foreground that can get in the way of focus.

CD

Circular Diaphragm

A rounded circular diaphragm provides gorgeous blur (Bokeh) effects. The circular diaphragm retains a nearly circular shape even at two stops down from the maximum aperture.

MR

Moisture Resistant Construction

Moisture-resistant construction helps prevent water from penetrating the lens making it ideal for outdoor photography.

TLU

TAMRON Lens Utility™ (TLU) software and app tool for lens function Customization

The TAMRON Lens Utility for PC or devices with Android¹ OS, developed in-house by TAMRON, lets users easily customize functions and update the latest firmware through the lens to provide flexible shooting options. Just connect the lens from its Connector Port via the optional TAMRON Connection Cable to the computer, smartphone, or tablet.²



Customization includes functions to support focusing operations and other actions when shooting still images or video. For example, A-B Focus allows users to limit focusing to two pre-set focus points, shifting focus from one subject to another with just a click of the Focus Set Button. Users can also choose between Linear and Non-linear, which affects how the focus shifts during manual focusing. Customize switch settings, switch the focus ring function from focus adjustment to aperture adjustment, change the rotation direction of the focus ring, and more.



TAMRON TLU-Mobile provides great features such as DFF (Digital Follow Focus) that allows you to fix a focus range between two points and perform focus operations from your smartphone screen, just like follow focus techniques. Focus Stopper, Focus Marker and Focus Ease are available. The direction of rotation of the aperture and focus rings, units indicated, and EV steps can

also be changed. And the Astro Focus Lock feature fixes the focus on stars, which is useful for astrophotography.

TAMRON TLU and TLU-Mobile can be downloaded from the TAMRON website or app stores, respectively.

¹ Android is a trademark of Google LLC.

² To connect your PC and lens, use the TAMRON Connection Cable (USB Type-A to Type-C/ Model CC-150, or USB Type-C to Type-C/ Model CC-350) sold separately. Lens firmware updates are not supported with the Mobile version. Performing firmware updates requires the TAMRON Lens Utility for PC and a computer.

CAMERA FORMAT/BRAND LENS COMPATIBILITY:

SONY E Mirrorless only (Di III-A)

11-20mm (B060) 17-70mm (B070) 18-300mm (B061)

SONY FE and E Mirrorless (Di III)

17-28mm (A046) 17-50mm (A068) 20-40mm (A062)
28-75mm (A063) 28-200mm (A071) 28-300mm (A074)
35-150mm (A058) 50-300mm (A069) 50-400mm (A067)
70-180mm (A065) 70-300mm (A047) 150-500mm (A057)
20mm (F050) 24mm (F051) 35mm (F053)
90mm (F072)

CANON RF (Di III)

11-20mm (B060)

NIKON Z Mirrorless (Di III)

28-75mm (A063) 35-150mm (A058) 70-300mm (A047)
150-500mm (A057) 50-400mm (A067) 90mm (F072)

FUJIFILM X Mirrorless (Di III-A & Di III)

11-20mm (B060) 17-70mm (B070) 18-300mm (B061)
150-500mm (A057)

CANON & NIKON Full-Frame DSLRs (Di)

24-70mm (A032) 70-200mm (A025) 150-600mm (A022)

MODEL	FOCAL LENGTH	FORMAT	MAX.F/	LENGTH*	WEIGHT*	FILTER	MOD
-------	--------------	--------	--------	---------	---------	--------	-----

All-in-One™ Zooms for Mirrorless Cameras

B061	18-300mm	Di III-A APS-C	F3.5-6.3	125.6 (4.9")	620 (21.9 oz)	67	0.15m (5.9") wide
A071	28-200mm	Di III Full-Frame	F2.8-5.6	117mm (4.6")	575g (20.3 oz)	67	0.19m (7.5")
A074	28-300mm	Di III Full-Frame	F4-7.1	126mm (5")	610g (21.5 oz)	67	0.19m (7.5") wide

Wide-angle Zooms for Mirrorless Cameras

B060	11-20mm	Di III-A APS-C	F2.8	86.2mm (3.4")	335g (11.8 oz)	67	0.15m (5.9") wide
A046	17-28mm	Di III Full-Frame	F2.8	99mm (3.9")	420g (14.8 oz)	67	0.19m (7.5") wide
A068	17-50mm	Di III Full-Frame	F4	114.4 (4.5")	460g (16.2 oz)	67	0.19m (7.5") wide

Standard Zooms for Mirrorless Cameras

B070	17-70mm	Di III-A APS-C	F2.8	119.3mm (4.7")	525g (18.5 oz)	67	0.19m (7.5")
A062	20-40mm	Di III Full-Frame	F2.8	86.4mm (3.4")	366g (12.9 oz)	67	0.17m (6.7") wide
A063	28-75mm	Di III Full-Frame	F2.8	117.6mm (4.6")	540g (19 oz)	67	0.18m (7.1") wide
A058	35-150mm	Di III Full-Frame	F2-2.8	158mm (6.2")	1,165g (41.1 oz)	82	0.33m (13") wide

Telephoto Zooms for Mirrorless Cameras

A069	50-300mm	Di III Full-Frame	F4.5-6.3	150mm (5.9")	665g (23.5 oz)	67	0.22m (8.7") wide
A067	50-400mm	Di III Full-Frame	F4.5-6.3	183.4mm (7.2")	1155g (40.7 oz)	67	0.25m (9.8") wide
A065	70-180mm	Di III Full-Frame	F2.8	149mm (5.9")	810g (28.6 oz)	67	0.85m (33.5")
A047	70-300mm	Di III Full-Frame	F4.5-6.3	148mm (5.8")	545g (19.2 oz)	67	1.5m (59.1") tele
A057	150-500mm	Di III Full-Frame	F5-6.7	209.6mm (8.3")	1725g (60.8 oz)**	82	0.6m (23.6")

Macro / Prime Lenses for Mirrorless Cameras

F072	90mm	Di III Full-Frame	F2.8	126.5mm (5")	630g (22.2oz.)	67	0.23m (9.1")
F050	20mm	Di III Full-Frame	F2.8	64mm (2.5")	220g (7.8 oz)	67	0.11m (4.3")
F051	24mm	Di III Full-Frame	F2.8	64mm (2.5")	215g (7.6 oz)	67	0.12m (4.7")
F053	35mm	Di III Full-Frame	F2.8	64mm (2.5")	210g (7.4 oz)	67	0.15m (5.9")

Lenses for DSLR Cameras

A032	SP 24-70mm	Di Full-Frame	F2.8	108.5mm (4.3")	900g (31.7 oz)	82	0.38m (15.0")
A025	SP 70-200mm	Di Full-Frame	F2.8	191.3mm (7.5")	1485g (52.4 oz)	77	0.95m (37.4")
A022	SP 150-600mm	Di Full-Frame	F5-6.3	257.7mm (10.1")	1990g (70.2 oz)	95	2.2m (86.6")

*All weights and lengths for Di lenses are for Nikon mount models

All weights and lengths for Di III & Di III-A lenses are for Sony mount models

C A T I O N S

MAXMAG	GRPS/ ELEM	BLADES	MOUNTS	TECHNOLOGIES
1:2 wide	19/15	7	Sony E & Fujifilm X	• VXD • LD • ASL • IF • MR • FL • CD • BBAR-G2 • ZL
1:3.1	18/14	7	Sony FE	• RXD • LD • XLD • ASL • GM • IF • MR • FL • CD • BBAR • ZL
1:2.8 wide	13/20	9	Sony FE	• VXD • VC • LD • XLD • GM • MR • FL • CD • BBAR-G2 • ZL • TLU
1:4 wide	12/10	7	Sony E, Fujifilm X & Canon RF	• RXD • LD • XLD • GM • IF • CD • MR • FL • BBAR-G2
1:5.2 wide	13/11	9	Sony FE	• RXD • LD • XLD • ASL • GM • IF • MR • FL • CD • BBAR
1:4.6 wide	15/13	9	Sony FE	• VXD • GM • LD • IF • MR • FL • CD • BBAR-G2 • TLU
1:4.8 wide	16/12	9	Sony E & Fujifilm X	• VC • RXD • CD • FL • MR
1:3.8 wide	12/11	9	Sony FE	• VXD • GM • LD • ASL • IF • MR • FL • CD • BBAR • TLU
1:2.7 wide	17/15	9	Sony FE & Nikon Z	• VXD • GM • LD • IF • MR • FL • CD • BBAR-G2 • TLU
1:5.7 wide	21/15	9	Sony FE & Nikon Z	• VXD • GM • LD • IF • ZL • MR • FL • CD • BBAR-G2 • TLU
1:2 wide	14/19	9	Sony FE	• VC • VXD • LD • XLD • MR • FL • CD • BBAR-G2 • ZL • TLU
1:2 wide	24/18	9	Sony FE Nikon Z	• VC • VXD • GM • XLD • LD • ASL • IF • MR • FL • CD • BBAR-G2 • ZL • TLU
1:4.6	19/14	9	Sony FE	• VXD • VC • LD • XLD • ASL • GM • IF • MR • FL • CD • TLU
1:5.1 tele	15/10	7	Sony FE & Nikon Z	• RXD • LD • MR • XLD • IF • FTM • LD • TLU (Z)
1:3.1 wide	25/16	7	Sony FE, Fujifilm X & Nikon Z	• VC • VXD • LD • XLD • ASL • IF • CD • MR • FL • BBAR-G2 • FLX • ZL • TLU (Z)
1:1	15/12	12	Sony FE Nikon Z	• VXD • LD • GM • MR • FL • CD • BBAR-G2 • FLMT • TLU
1:2	10/9	7	Sony FE	• OSD • LD • GM • BBAR • MR • FL • CD
1:2	10/9	7	Sony FE	• OSD • LD • GM • BBAR • MR • FL • CD
1:2	9/8	7	Sony FE	• OSD • LD • GM • BBAR • MR • FL • CD
1:5	17/12	9	C/N	• SP • VC • LD • GM • ASL • XR • IF • USD • MR • FL • eBand • TAP • CD • FTM • DMPU
1:6.1	23/17	9	C/N	• SP • VC • LD • XLD • IF • USD • MP • FL • eBand • TAP • CD • FTM • DMPU • FLMT
1:3.8	21/13	9	C/N	• SP • VC • USD • LD • IF • FTM • CD • MR • eBand • ZL • FLX • FL • TAP • DMPU • FLMT

TAMRON VIP CLUB

Become a TAMRON Americas VIP Club Member

*Register your TAMRON lenses towards VIP status
and reap the rewards*

TAMRON Americas VIP Club rewards users in the USA and Canada who have registered their eligible TAMRON lenses through our online warranty registration system. There are three VIP Club levels: Silver for those having registered three to four purchased lenses; Gold for those having registered five purchased lenses; and Platinum for those having registered six or more purchased lenses. Club membership will be evaluated each year in February to include new members who qualify and to increase the status level of current members if applicable. Get complete rules and program details at www.tamron-americas.com.



@tamronamericas



@tamronamericas



@Tamronvids



@tamronamericas

#withmytamron



Find Your TAMRON Lens



All TAMRON lenses include hoods and caps.



Caution: Please read the instruction manual carefully before using lens.

TAMRON

TAMRON AMERICAS

10 Austin Blvd., Commack, NY 11725
(800) 827-8880

www.tamron-americas.com

custserv@tamron.com